



fort
MYERS
ISLANDS, BEACHES
& NEIGHBORHOODS

2022 Lee County VCB Hurricane Workshop –
Preparation & Recovery

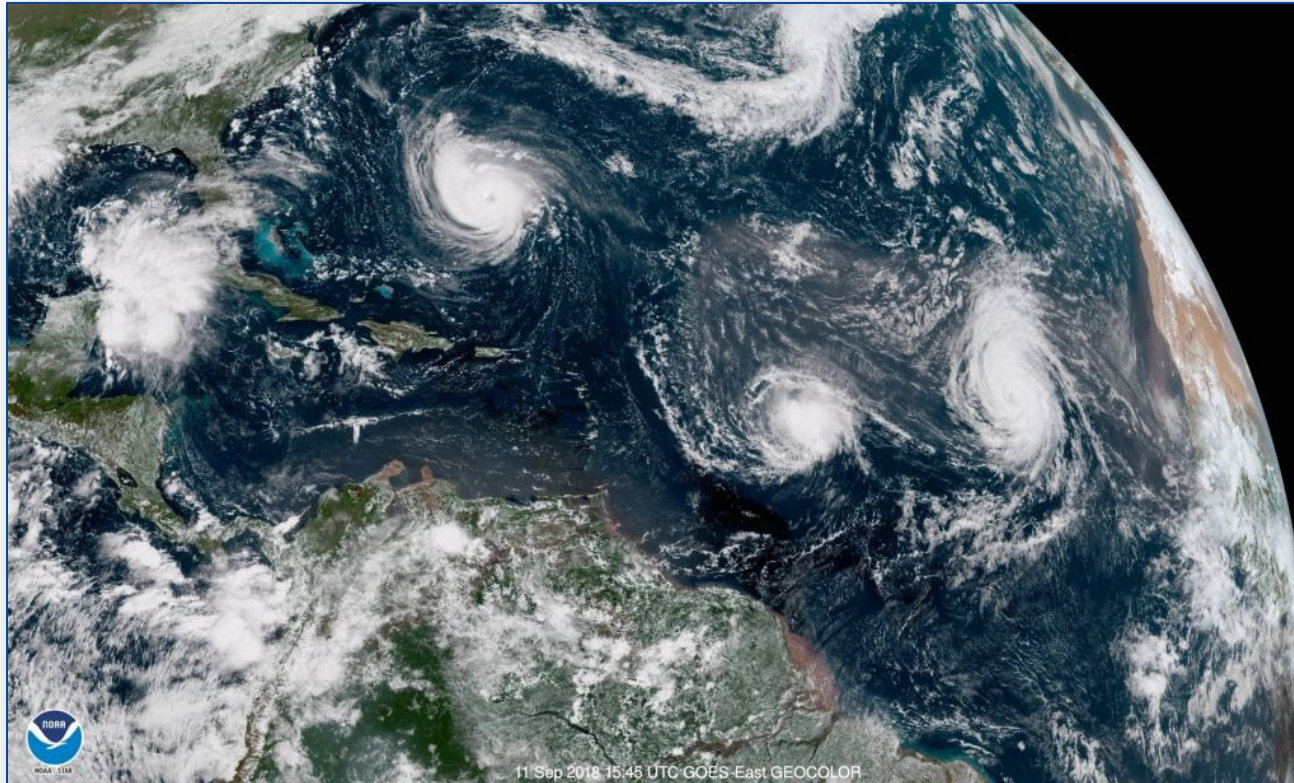




TODAY'S AGENDA

- Welcome & EOC Housekeeping
LC Emergency Operations Center
- National Weather Service Update
- VCB Planning & Recovery
- Hurricane Dilbert Exercise
- Discussion & QA

Hurricane Season is June 1 through November 30



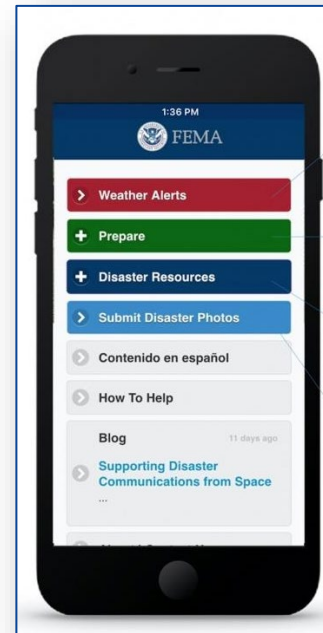
Daniel Noah
Meteorologist
NWS Tampa Bay

Have Multiple Ways to Receive Weather Warnings

Commercial Apps
From your favorite local
TV, Radio, or Newspaper



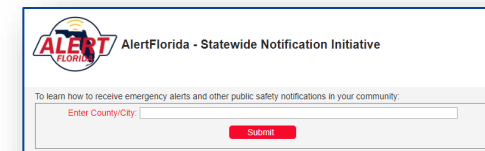
Search for FEMA
in App Store



Weather Radio

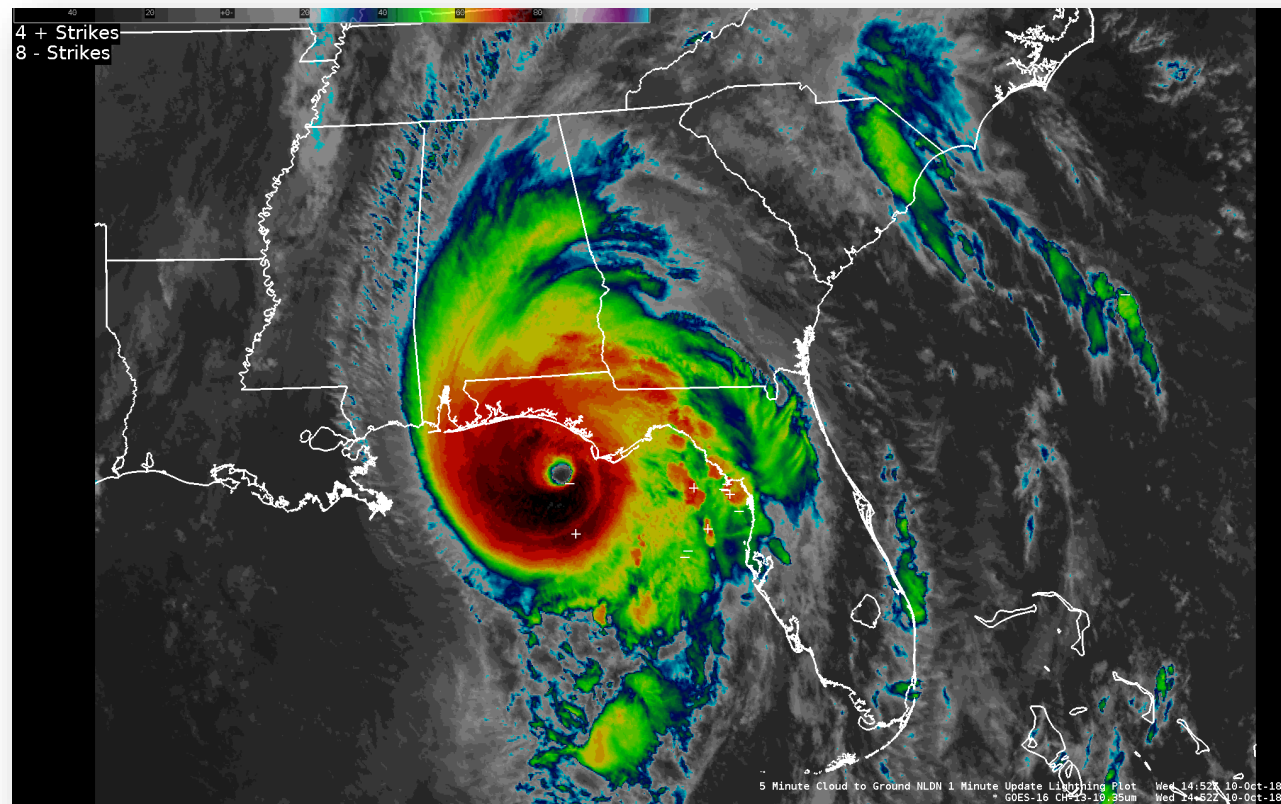


AlertFlorida.com





2018 Major Hurricane Michael



- CAT 5 with 160 mph wind
- Surge, tide, and waves reached 19 feet at Mexico Beach
- At least 59 people killed in the United States
- 4th CAT 5 to hit the United States



Every Red Dot on Map is a Home Washed Off Foundation



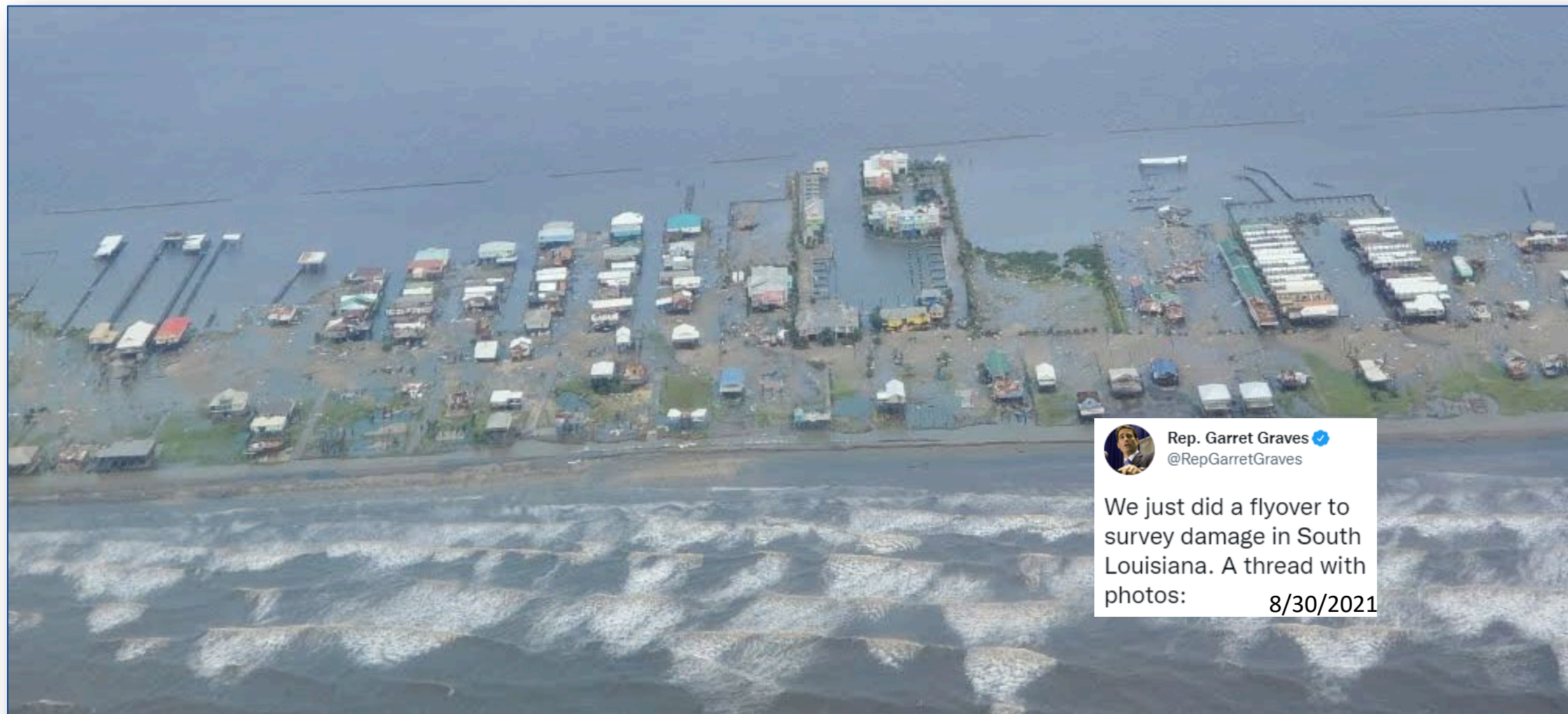


Cameron, LA – 2020 Hurricane Laura





Grand Isle, LA – 2021 Major Hurricane Ida

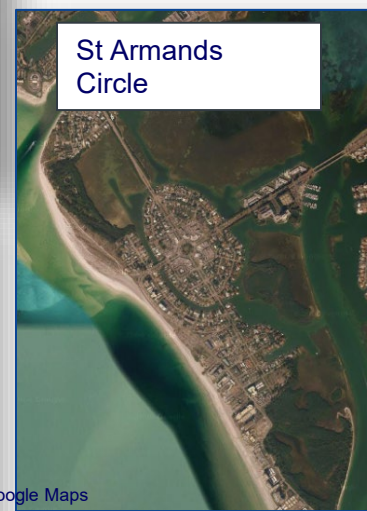


Rep. Garret Graves
@RepGarretGraves

We just did a flyover to survey damage in South Louisiana. A thread with photos: 8/30/2021



Our Barrier Islands are No Different



Our beaches have around a 0.5% chance of a Major CAT 3+ Hurricane each year



TRUE or FALSE?

Flooding from heavy rain is the second leading cause of fatalities in a tropical cyclone.



TRUE or FALSE?

Flooding from heavy rain is the second leading cause of fatalities in a tropical cyclone.

TRUE



2022 Hurricane Season Forecast

| | | |
|-----------------|----------------|-----------------|
| Alex | Hermine | Owen |
| Bonnie | Ian | Paula |
| Colin | Julia | Richard |
| Danielle | Karl | Shary |
| Earl | Lisa | Tobias |
| Fiona | Martin | Virginie |
| Gaston | Nicole | Walter |

| | Average | Forecast |
|------------------|---------|----------|
| Named Storms | 14 | 21 |
| Hurricanes | 6 | 10 |
| Major Hurricanes | 3 | 6 |

Questions or Comments? Email Daniel.Noah@noaa.gov

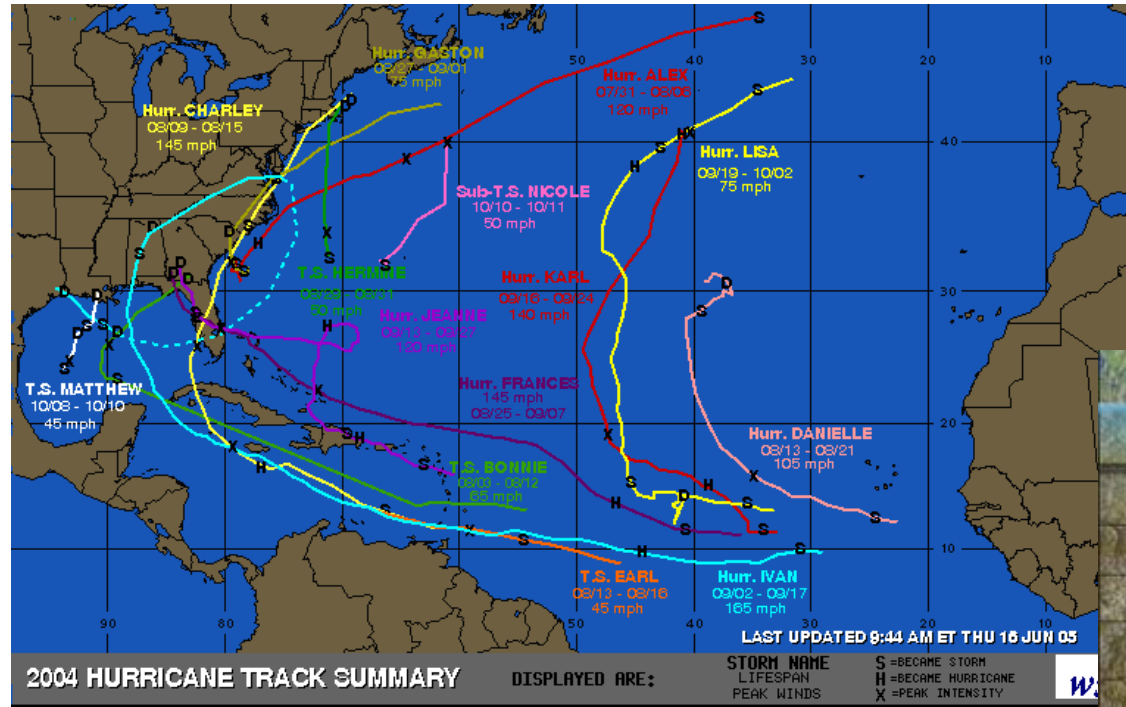


John Finelli, a resident of the Tropicana Mobile Home Park in the Iona area of Fort Myers, Fla., moves damaged material after a tornado destroyed his home on Sunday, Jan. 16, 2022. His parents were in the home and were transported to the hospital. (Andrew West/The News-Press via AP) (Andrew West/AP)

“That’s my house that’s turned upside down,” he told the newspaper. “The tornado took me off my feet blew me toward the east wall and buried me under the sink, refrigerator, kitchen chairs and everything else.”

<https://weather.gov/tampa>
<https://radar.weather.gov>
<https://weather.gov/forecastpoints>
<https://weather.gov/wrn>

Historic 2004 & 2005

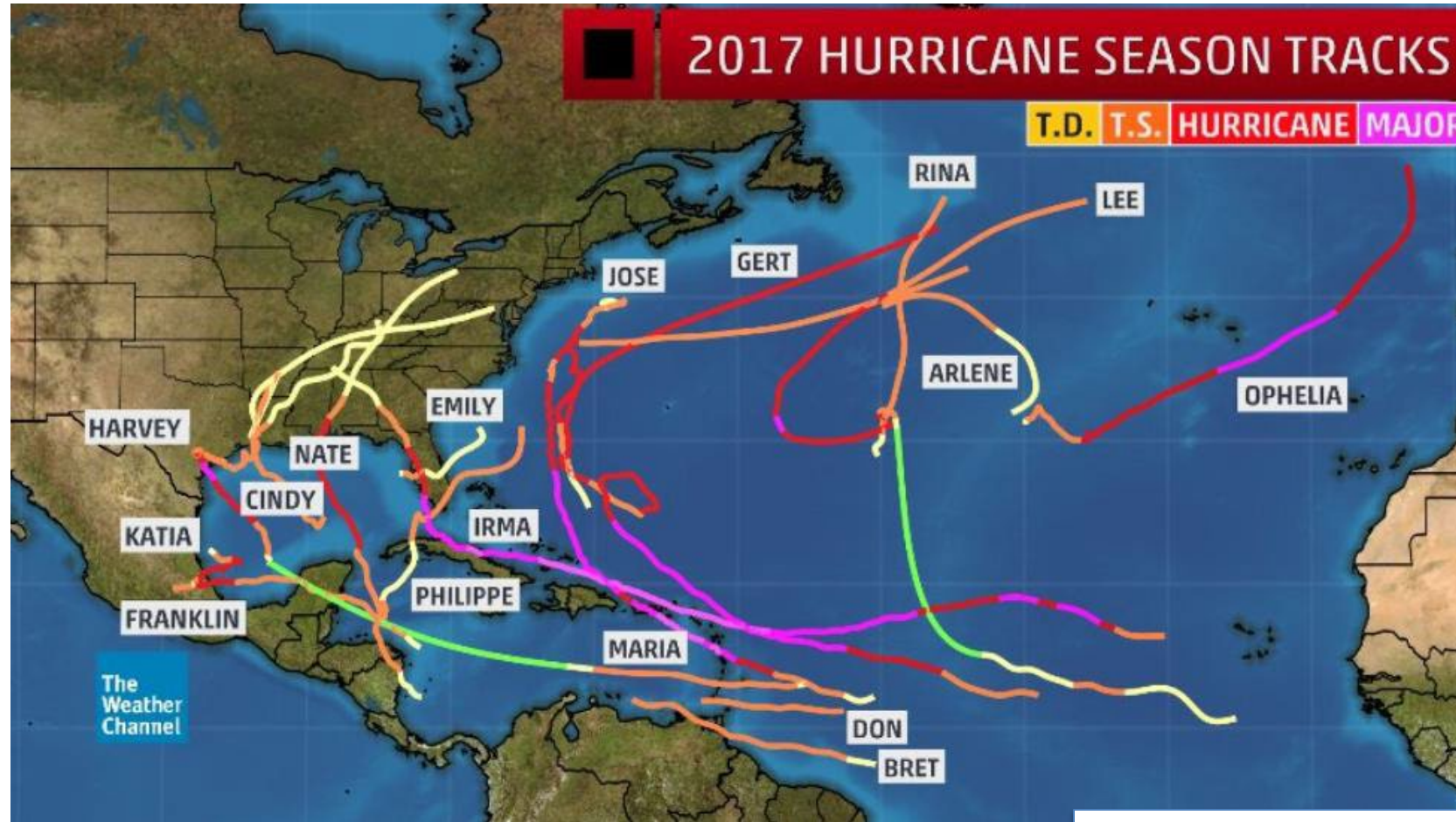


2004: 15 named storms

2005: 26 named storms

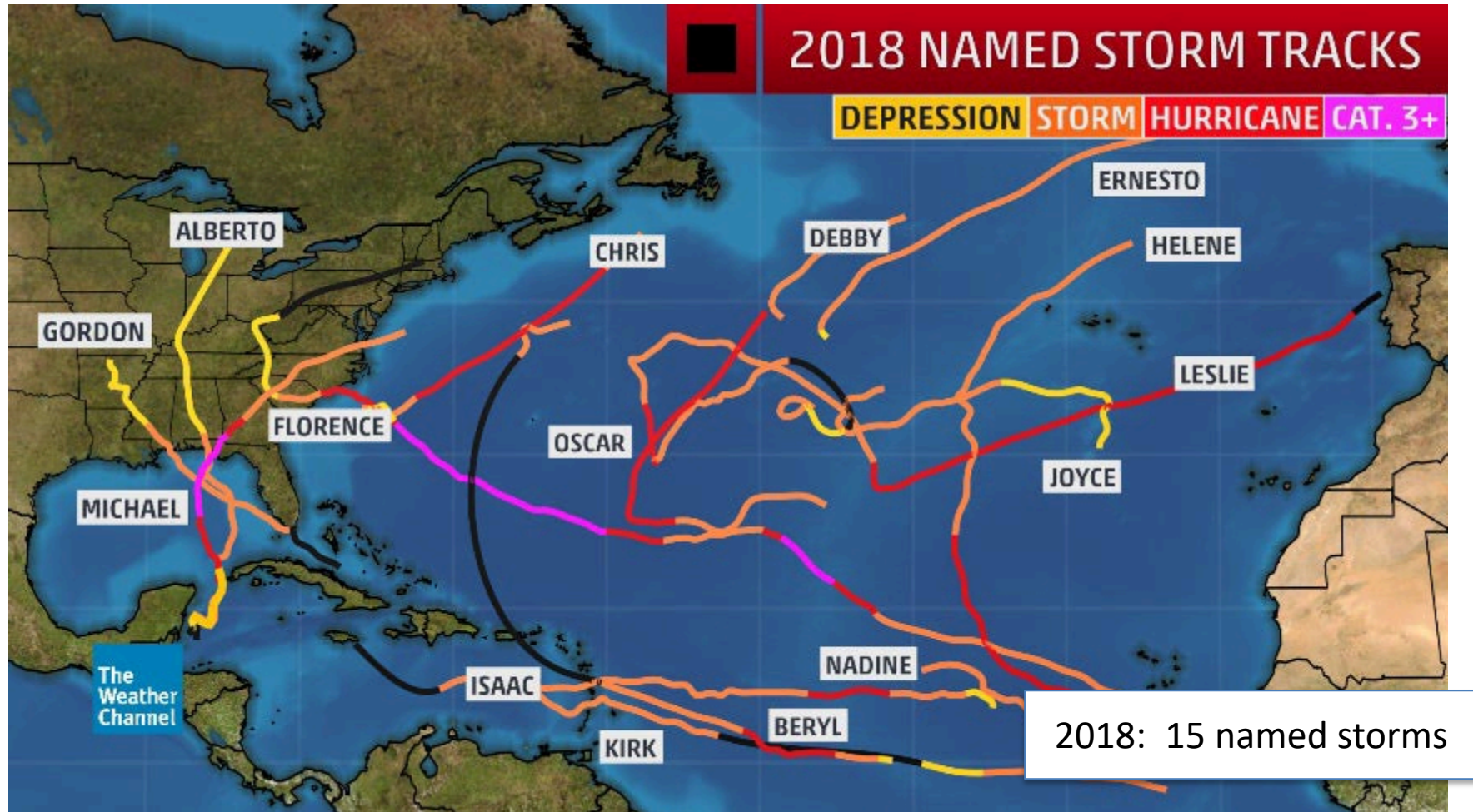


2017 Hurricane Season

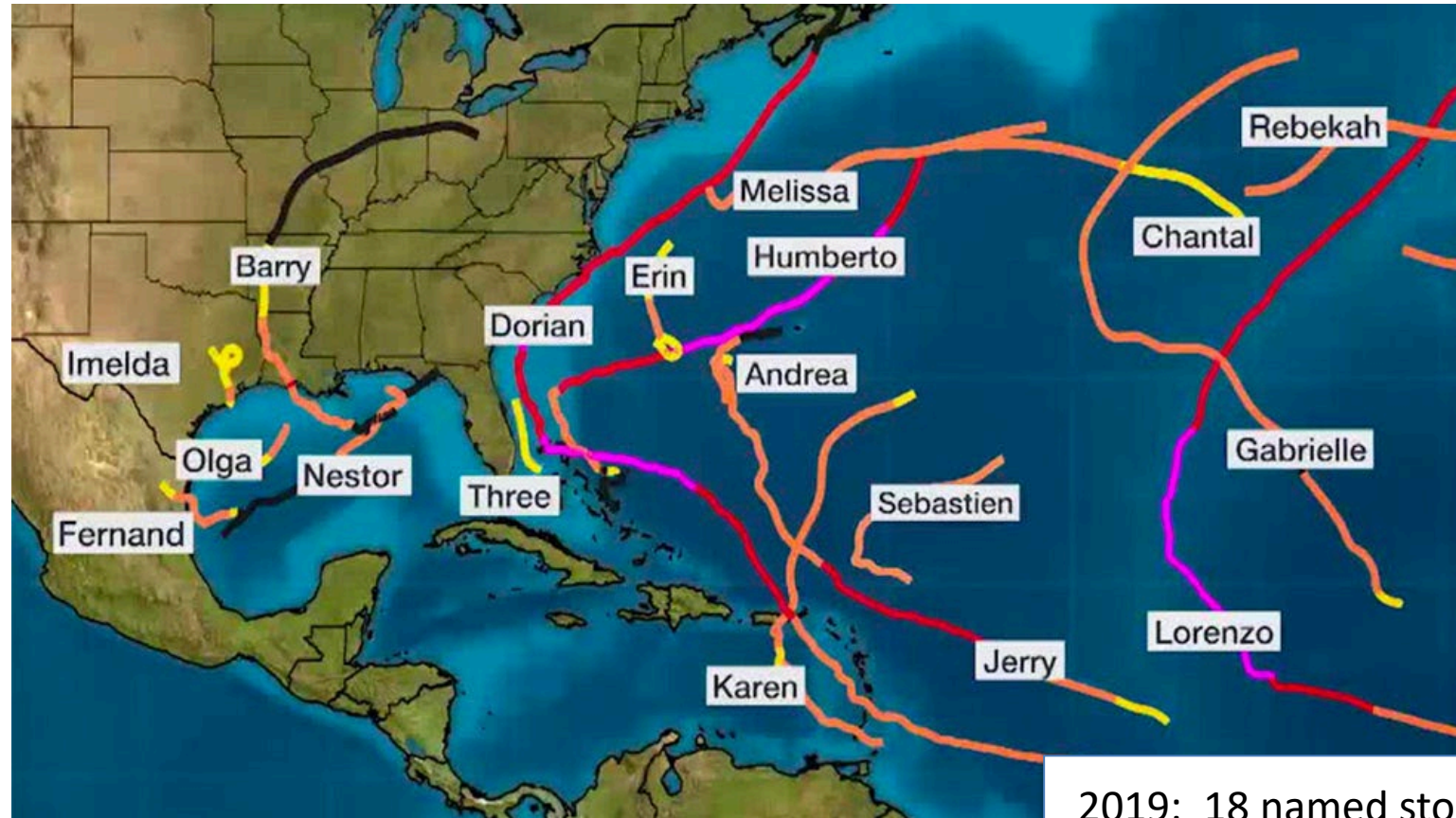


2017: 17 named storms

2018 Hurricane Season



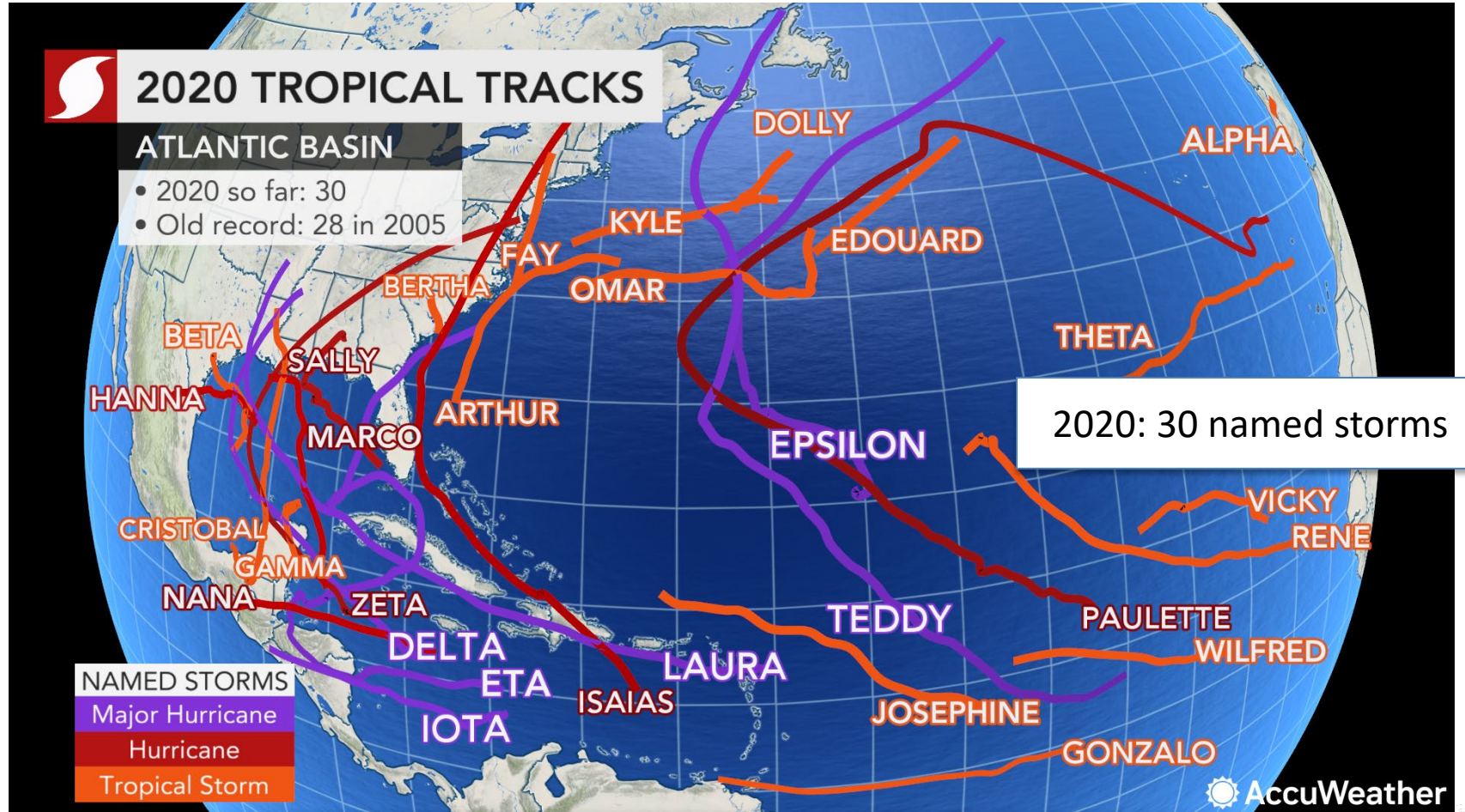
2019 Hurricane Season



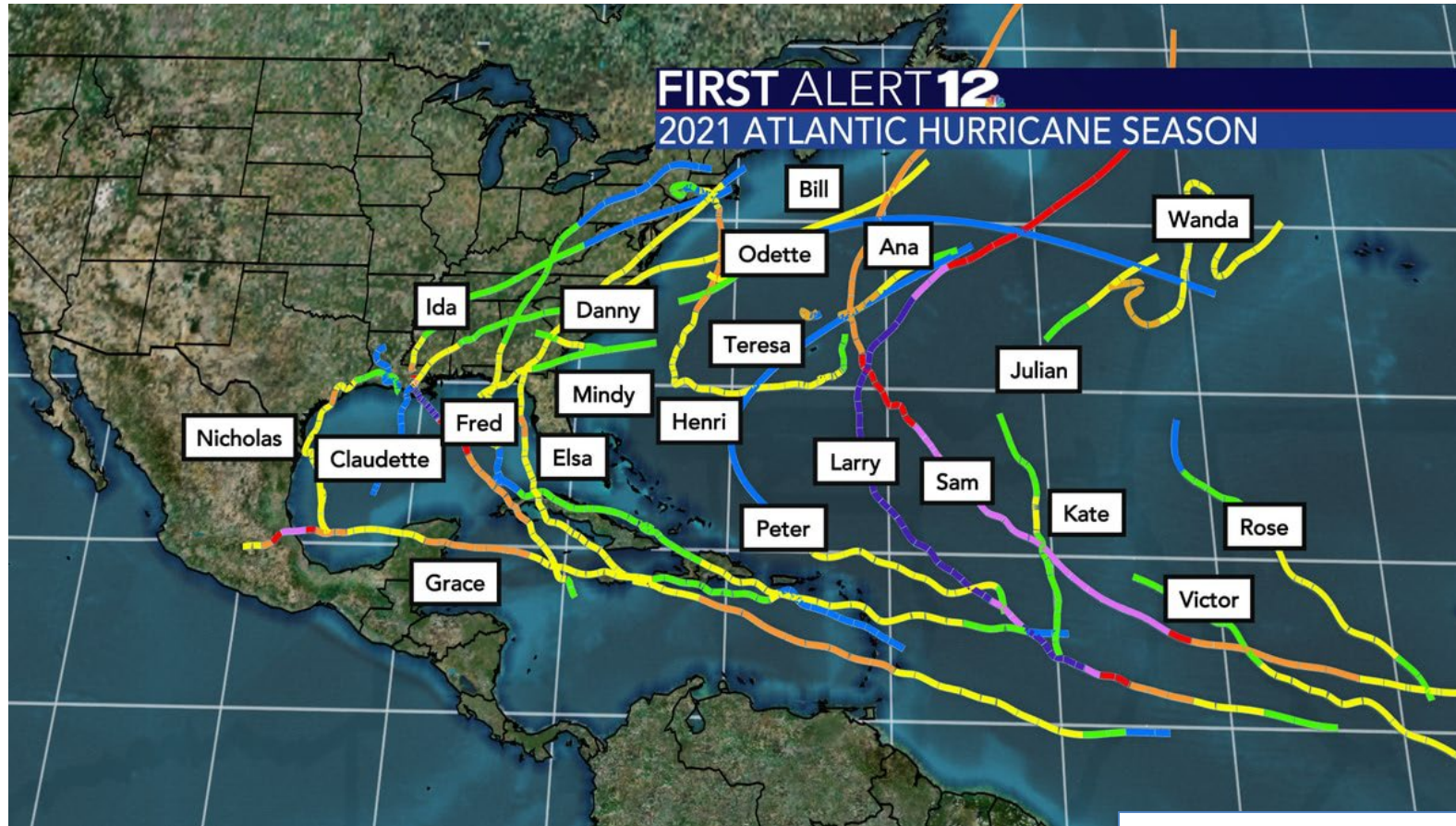
2019: 18 named storms

fort
MYERS
ISLANDS, BEACHES
& NEIGHBORHOODS

2020 Hurricane Season



2021 Hurricane Season



2021: 21 named storms

What hurricane hazard has the greatest potential for loss of life and property?

Flooding from Heavy Rain

Hurricane Wind

Storm Surge

Tornadoes

What hurricane hazard has the greatest potential for loss of life and property?

Flooding from Heavy Rain

Hurricane Wind

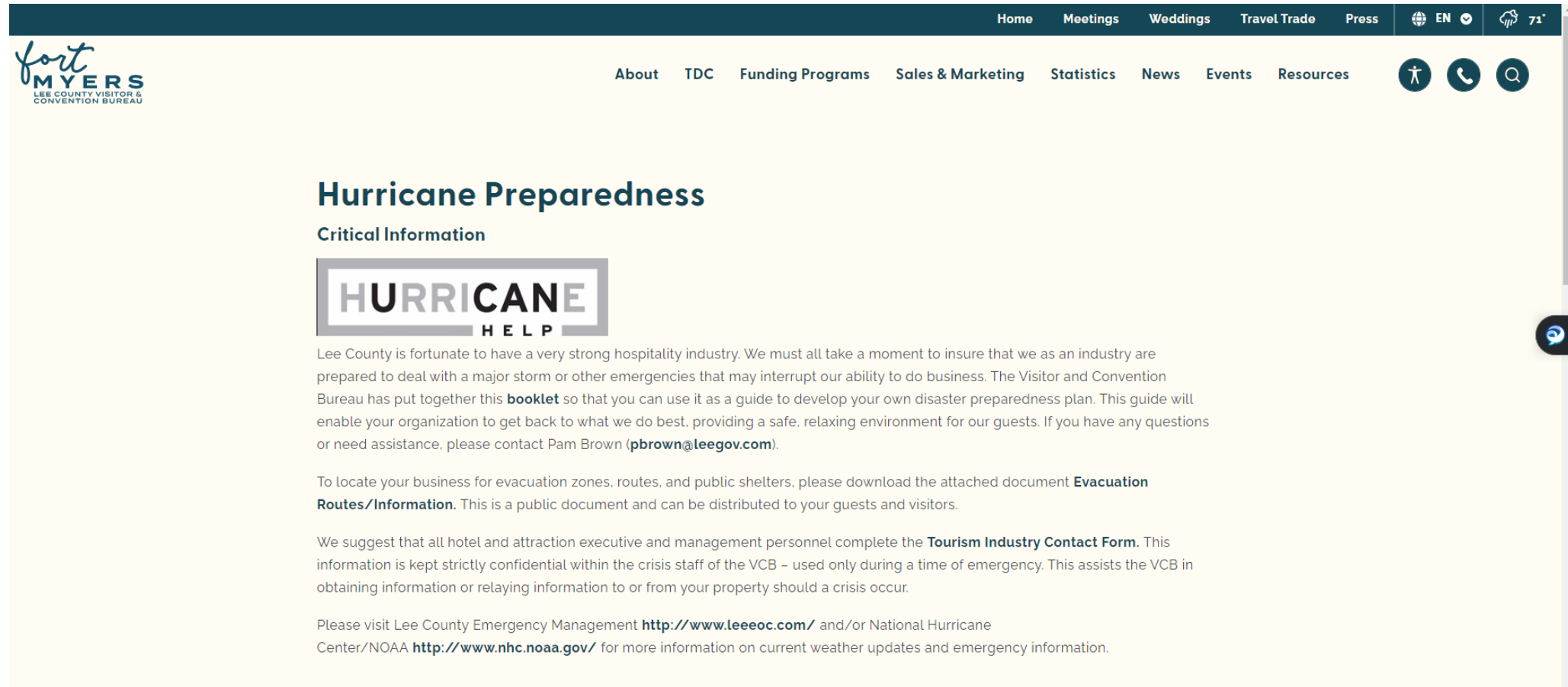
Storm Surge

Tornadoes

Storm Surge

VCB – Communications Hub

<https://www.leevcb.com/hurricane-info>



The screenshot shows the website for the Fort Myers Lee County Visitor & Convention Bureau. The top navigation bar includes links for Home, Meetings, Weddings, Travel Trade, and Press. A secondary navigation bar lists About, TDC, Funding Programs, Sales & Marketing, Statistics, News, Events, and Resources. The page title is "Hurricane Preparedness" with a subtitle "Critical Information". A graphic with the text "HURRICANE HELP" is displayed. The main content area provides information about a booklet for disaster preparedness, contact information for Pam Brown, and links to evacuation routes and tourism industry contact forms. The footer of the page is a solid red bar with the Fort Myers logo.


fort MYERS
LEE COUNTY VISITOR & CONVENTION BUREAU

Home Meetings Weddings Travel Trade Press

About TDC Funding Programs Sales & Marketing Statistics News Events Resources

Hurricane Preparedness

Critical Information



Lee County is fortunate to have a very strong hospitality industry. We must all take a moment to insure that we as an industry are prepared to deal with a major storm or other emergencies that may interrupt our ability to do business. The Visitor and Convention Bureau has put together this **booklet** so that you can use it as a guide to develop your own disaster preparedness plan. This guide will enable your organization to get back to what we do best, providing a safe, relaxing environment for our guests. If you have any questions or need assistance, please contact Pam Brown (pbrown@leegov.com).

To locate your business for evacuation zones, routes, and public shelters, please download the attached document **Evacuation Routes/Information**. This is a public document and can be distributed to your guests and visitors.

We suggest that all hotel and attraction executive and management personnel complete the **Tourism Industry Contact Form**. This information is kept strictly confidential within the crisis staff of the VCB – used only during a time of emergency. This assists the VCB in obtaining information or relaying information to or from your property should a crisis occur.

Please visit Lee County Emergency Management <http://www.leeec.com/> and/or National Hurricane Center/NOAA <http://www.nhc.noaa.gov/> for more information on current weather updates and emergency information.

fort MYERS
ISLANDS, BEACHES & NEIGHBORHOODS

VCB – Communications Hub

<https://ftmyers.extranet.simpleviewcrm.com>

The screenshot displays the Fort Myers VCB Communications Hub website. The top navigation bar includes the Fort Myers logo, "Lee County CRM Partners", a user profile for "pbrown@leegov.com" with a "Logout" link, and a dropdown menu for "Lee County Visitor & Convention Bureau". A search icon is also present.

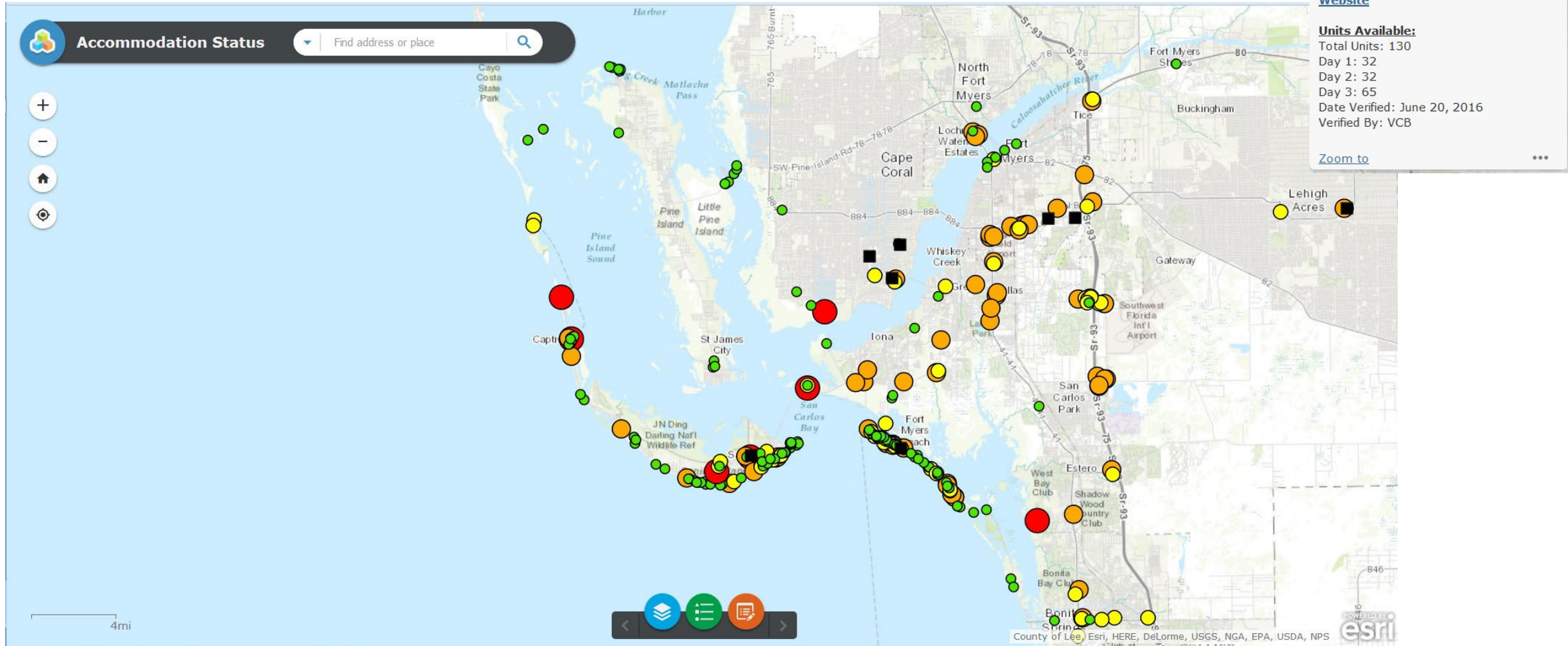
A left-hand sidebar contains navigation links: HOME, PROFILE, COLLATERAL, OPPORTUNITIES, REPORTS, ADMINISTRATION, and a link to "CLICK HERE FOR ASSISTANCE FROM THE VCB".

The main content area features a large banner image of a beach. Overlaid on the right side of the banner is a text box that reads: "Get exclusive access to our latest group offerings! Did you know that we publish a quarterly meeting planner newsletter? See our archive here." Below the banner, there are two sections: "Marketplace" and "Partner Bulletins".

The "Marketplace" section displays a listing for "2022 Hurricane Preparedness Response" with a registration period of "05/13/2022 - 11/30/2022" and a "LEARN MORE" button. The "Partner Bulletins" section shows a bulletin titled "Fort Myers Sun Saver Passport" with a "View Full" link.

At the bottom of the main content area is a "Post Board" section, which includes a post from the "Lee County Visitor & Convention Bureau" dated "08/05/2021" regarding participation with Threshold 360.

VCB – Communications Hub



Groups

City of Fort Myers Beach, City of Sanibel and Captiva

City of Fort Myers, Unincorporated Lee County

Village of Estero, City of Bonita Springs

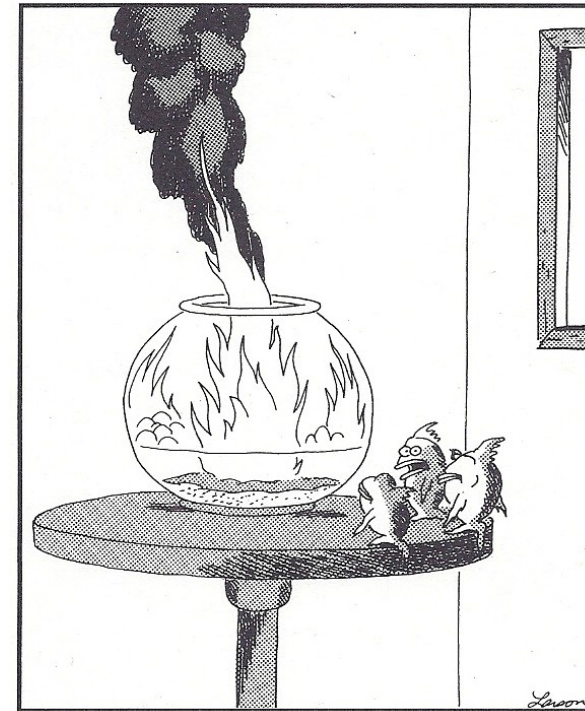
City of Cape Coral, Cabbage Key, Useppa, Boca Grande, Pine Island, Matlacha

Group Introduction - One Presenter

- Type of Businesses?
- Anyone at current business less than 1 year?
- Anyone who has lived in FL less than 1 year?

HURRICANE RECOVERY

Hurricane Dilbert
Table Top Exercise
June 10, 2022



“Well, thank God we all made it out in time. ...
'Course, now we're equally screwed.”


The objectives of this Table Top Exercise are to:

- Exercise those involved in the Hurricane Recovery process
- Establish a benchmark
- Identify any issues that require resolution

THE RULES

- Ask the questions and make the suggestions you would in a **real world event**
- Questions from the evaluators and controller are NOT “corrections”
- The controller may “suspend time” at any point as necessary
- Treat each other professionally and with courtesy
- We have quantum leaped through time, it is Tuesday, October 25, 2022

Are you ready?



How do you answer the following questions?

Pre-Storm: List answers on your board

Does your business have a Hurricane/Crisis plan?

Have you read it?

Where is it located?

When was it last updated?

Hurricane Dilbert

- Major Hurricane Dilbert threatens Florida
- As of 1900 hrs on Sunday, October 23 the following has been completed:

Evacuations were ordered for:

- Mobile/Manufactured Homes
- Special Needs
- Zone A
- Zone B

Shelters were opened:

- 5 public, including pet friendly
- Special Needs - Pottorf

2022 Evacuation Zones and Public Shelters

EMERGENCY PUBLIC SHELTERS

Cape Coral

1. Island Coast High School – 2125 DeNavarra Pkwy

Estero

2. Estero Recreation Center – 9200 Corkscrew Palm Blvd
3. Hertz Arena – 11000 Everblades Pkwy

Fort Myers

4. Dunbar High School – 3800 Edison Ave
5. Gateway High School - 13820 Griffin Dr
6. South Fort Myers High School – 14020 Plantation Blvd
7. Treeline Elementary School - 10900 Treeline Ave

Lehigh Acres

8. East Lee County High School – 715 Thomas-Sherwin Ave
9. Harns Marsh Elementary School – 1800 Unice Ave N
10. Harns Marsh Middle School – 1820 Unice Ave N
11. Mirror Lakes Elementary School – 525 Charwood Ave
12. Tortuga Preserve Elementary School - 1711 Gunnerly Rd
13. Varsity Lakes Middle School – 801 Gunnerly Rd
14. Veterans Park Recreation Center – 49 Homestead Rd

North Fort Myers

15. North Fort Myers Academy of the Arts – 1856 Arts Way
16. North Fort Myers Recreation Center – 2000 N Recreation Park Way

San Carlos

17. Alico Arena – 12181 FCGU Lake Pkwy

Tice

18. Manatee Elementary School - 5301 Tice St
19. Oak Hammock Middle School – 5321 Tice St

****Be Advised:** **NOT** all shelters will be open for every event. The opening of shelters is dependent upon the nature of each specific event.

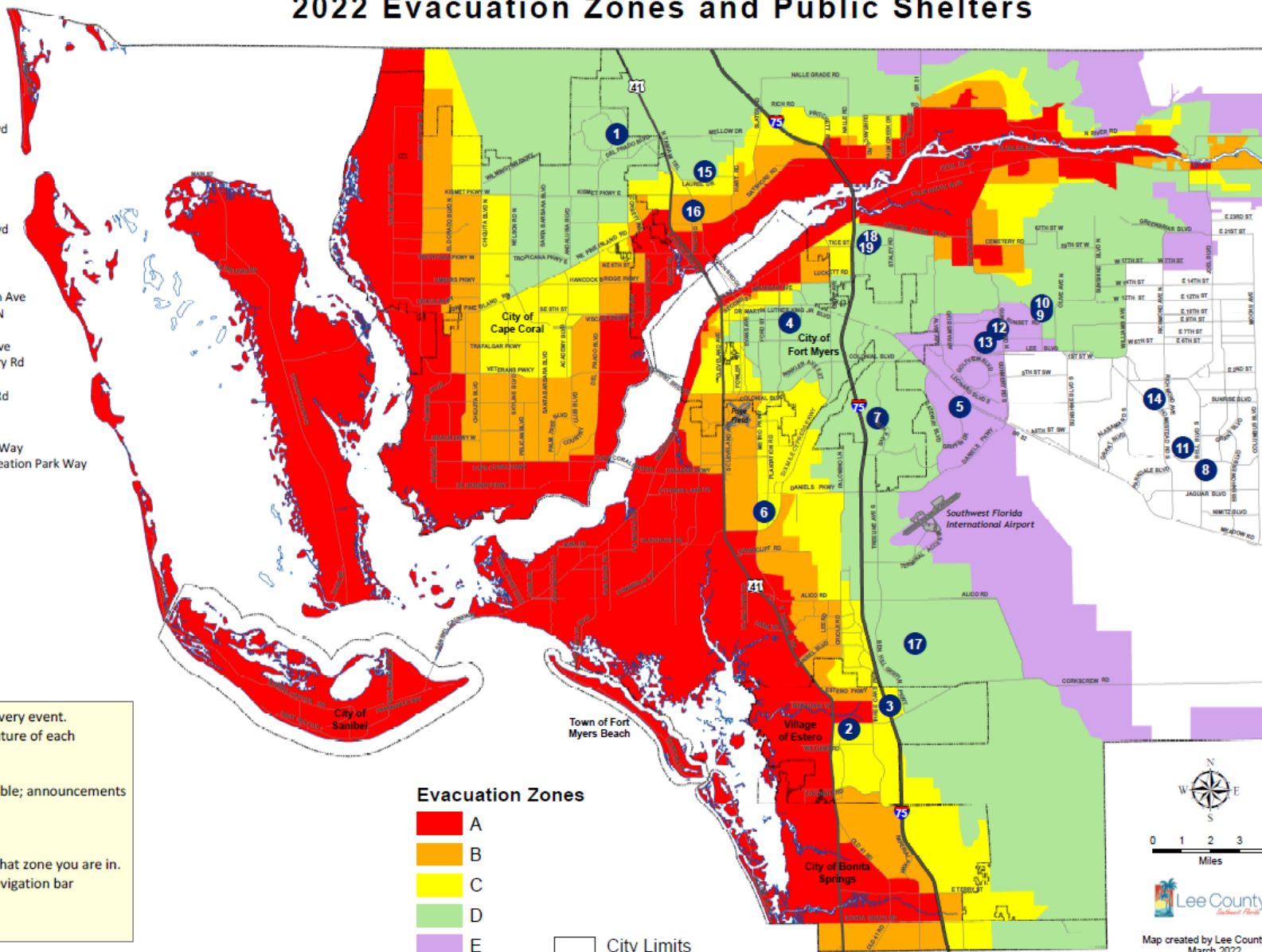
Please Note: Pet-friendly sheltering will be available; announcements will be made at the time.

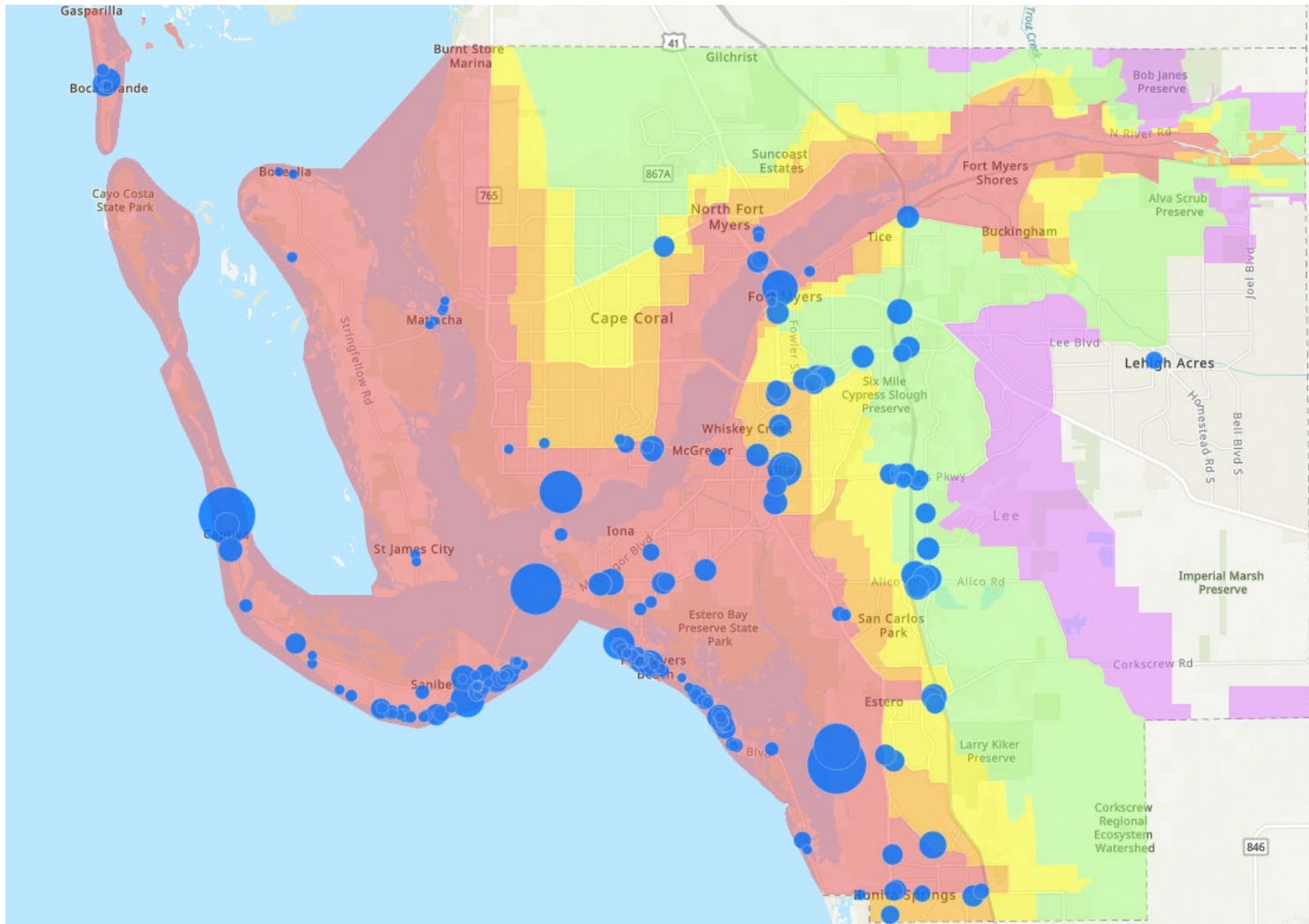
Know Your Evacuation Zone:

Visit our website www.LeeEOC.com to find out what zone you are in.

1. Click on "Know My Evacuation Zone" in the navigation bar
2. Click the Find My Evacuation Zone link
3. Enter your address in the search bar

Source: Lee County Emergency Management





Meetings with EOC, Lee County Admin, Lee County Port Authority

PRE-STORM: News from the VCB

All parties on alert

Plans are being reviewed

Checking with departmental staff – locations and needs

Hotel properties on the barrier islands and in Evacuation Zone A

- Please use Simpleview Extranet to report on groups in house

Hotel properties east of US 41

- Please use SV Extranet to report on current occupancy

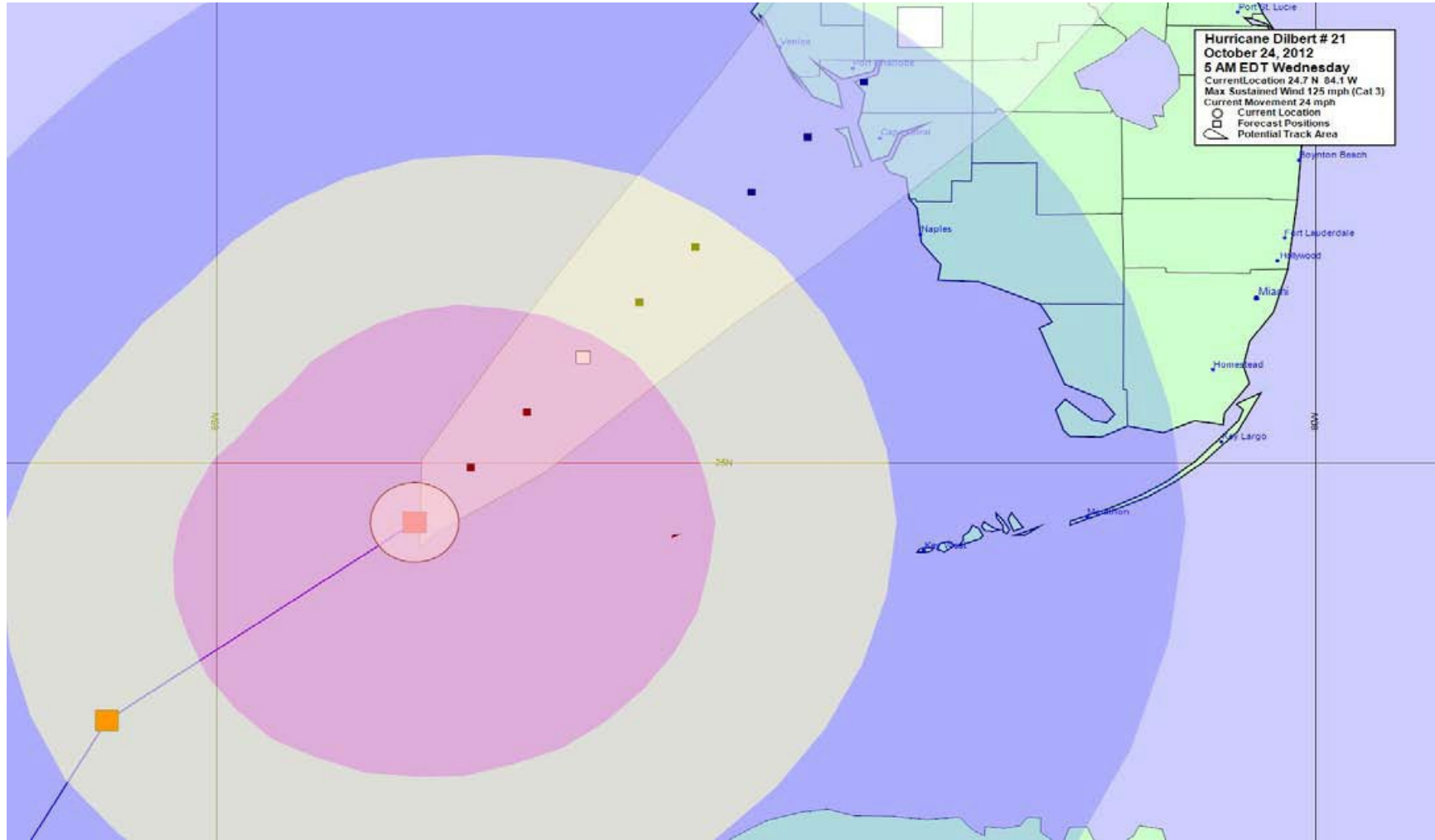
Hotel properties in Evacuation Zone A/B

- VCB staff member located at the EOC – activation mode
- Evacuation – pay attention to news media. Contact VCB if you need assistance or have questions with transportation, accommodations, or any shortfalls of information
- Assistance by VCB/Lee County to move people?

Hotel properties east of US 41

- Influx of those escaping the path of a storm
- Evacuation shelters open
- Prepare for no electricity – generator preparation if you have one

On Monday 24th Hurricane Dilbert begins impacting Lee County.



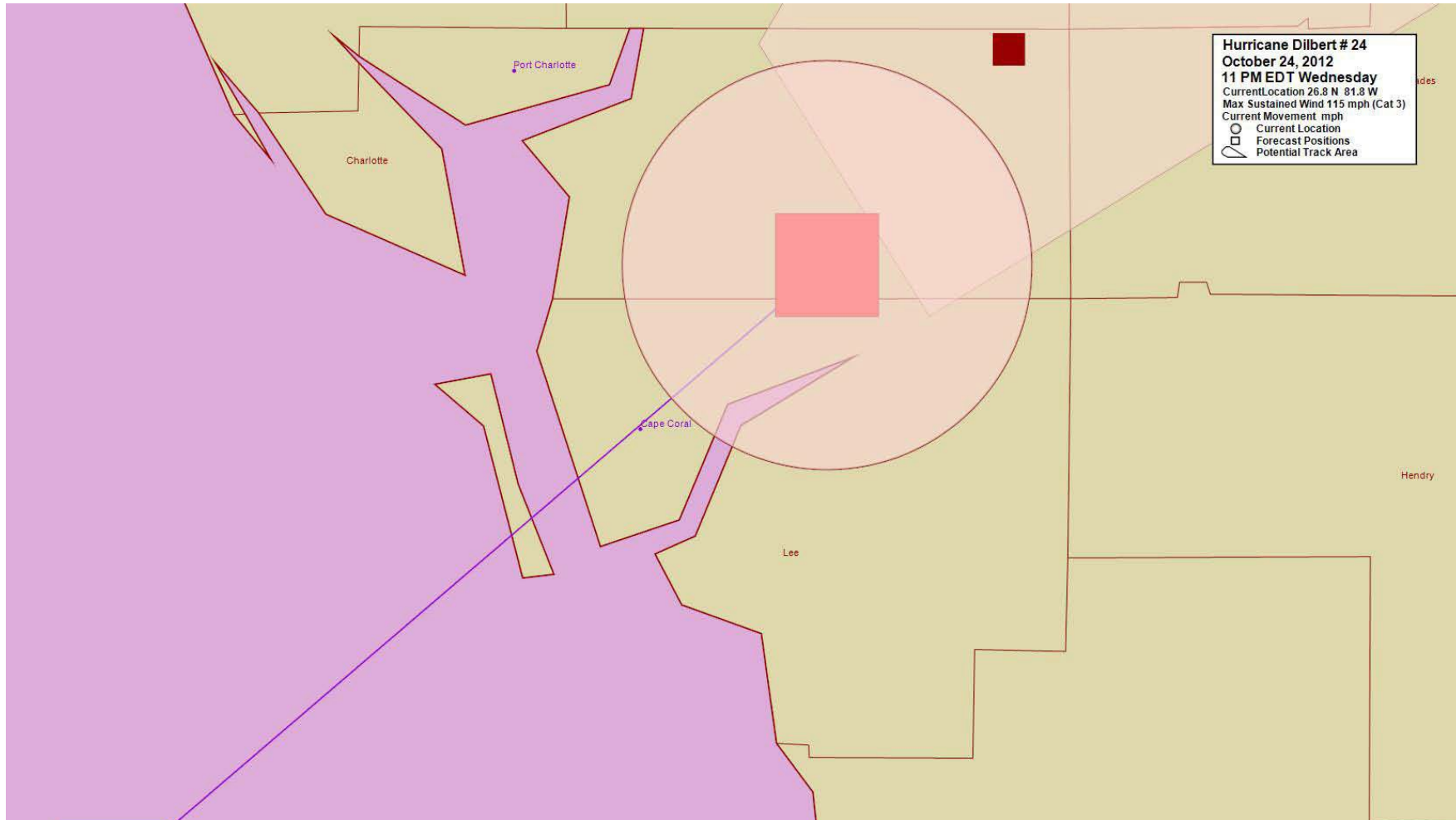
Hotel properties in
Evacuation Zone
A/B

- VCB staff member located at the EOC – activation mode
- Evacuation – pay attention to news media. Contact VCB if you need assistance or have questions with transportation, accommodations, or any shortfalls of information
- Assistance by VCB/Lee County to move people?

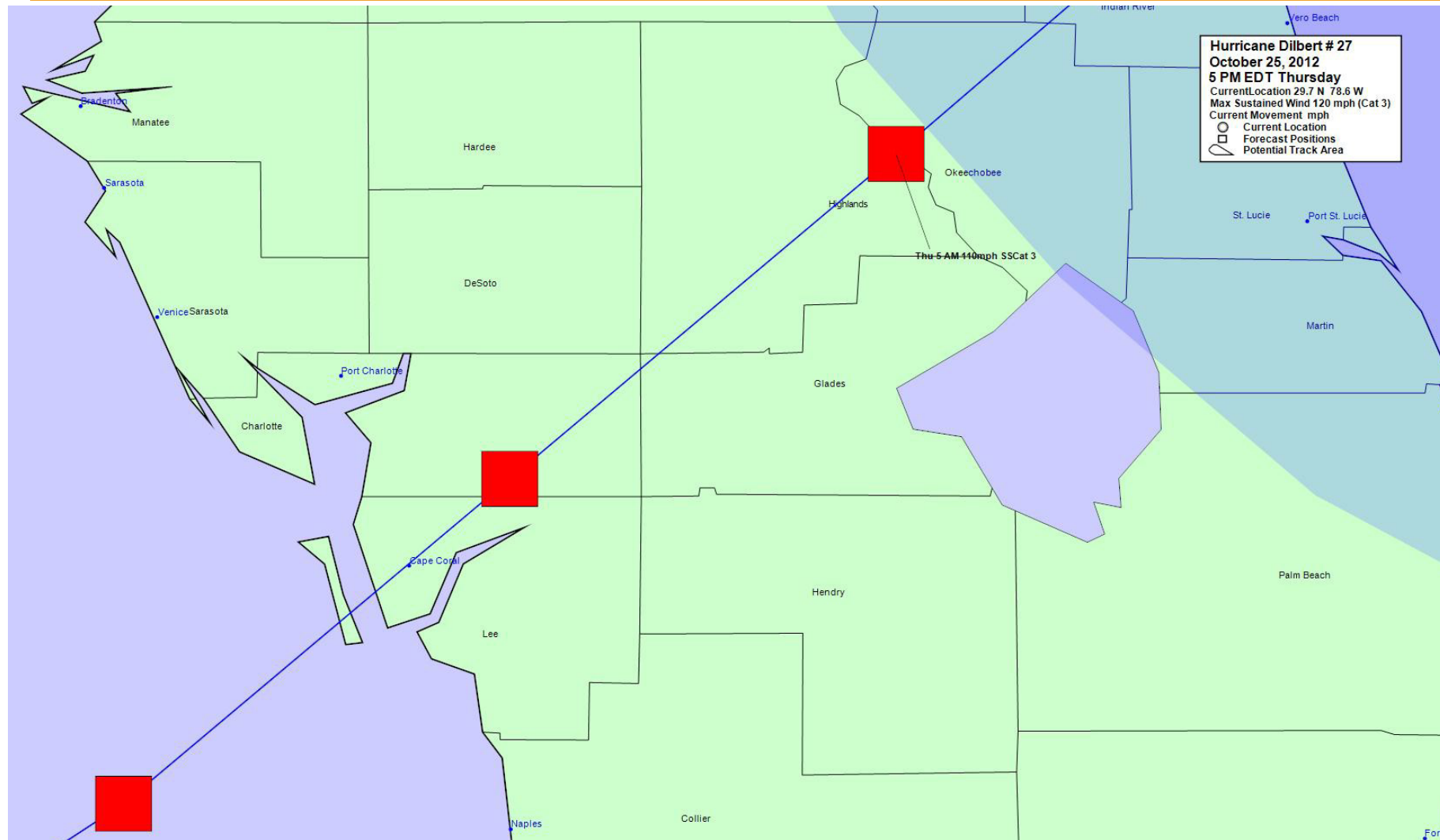
Hotel properties
east of US 41

- Influx of those escaping the path of a storm
- Evacuation shelters open
- Prepare for no electricity – generator preparation if you have one

HURRICANE DILBERT – Monday, OCT. 24



HURRICANE DILBERT – Tuesday, OCT. 25



Shelters, Critical Facilities and Flooding to 15' ASL

| EMERGENCY SHELTER | |
|-------------------|--------------------------------------|
| 1 | Aliso Arena |
| 2 | Alva Elementary/Middle School |
| 3 | Bonita Springs YMCA |
| 4 | Colonial Elementary School |
| 5 | Diplomat Elementary School |
| 6 | Diplomat Middle School |
| 7 | Dunbar High School |
| 8 | East Lee Co. High School |
| 9 | Estero Community Recreation Center |
| 10 | Estero High School |
| 11 | German Arena |
| 12 | Hams Marsh |
| 13 | Island Coast High |
| 14 | John Colin Elementary |
| 15 | James Stephens International Academy |
| 16 | Lehigh High School |
| 17 | Littleton Elementary School |
| 19 | Mariner Middle School |
| 20 | Mirror Lakes Elementary School |
| 21 | North Ft. Myers Academy |
| 22 | Oak Hammock Middle |
| 23 | Rivertale High School |
| 24 | Royal Palm Exceptional Center |
| 26 | South Fort Myers High School |
| 28 | Three Oaks Elementary School |
| 29 | Three Oaks Middle School |
| 30 | Tice Elementary School |
| 31 | Varsity Lakes Middle School |
| 32 | Veterans Park Middle School |

Hurricane Dilbert

Radius to maximum winds
(17.5 miles)

Flooding to 15' Above Sea Level

Depth of Water (Feet)

- 0 - 3
- 3 - 6
- 6 - 9
- 9 - 12
- 12 - 15

Health Care Facilities

- Hospital
- Adult Day Care Center
- Ambulatory Surgery Center
- Assisted Living Facility
- Skilled Nursing Facility

Emergency Operations

- Law Enforcement
- Fire Station
- EMS Station
- Emergency Shelter

Public and Private Utilities

- Electric Facility
- Water Treatment Plant
- Domestic WWTP

Government Building

- Public School
- Transportation Facility
- Hazardous Material Site

Gulf of Mexico



Lee County GIS Department
May 21, 2012

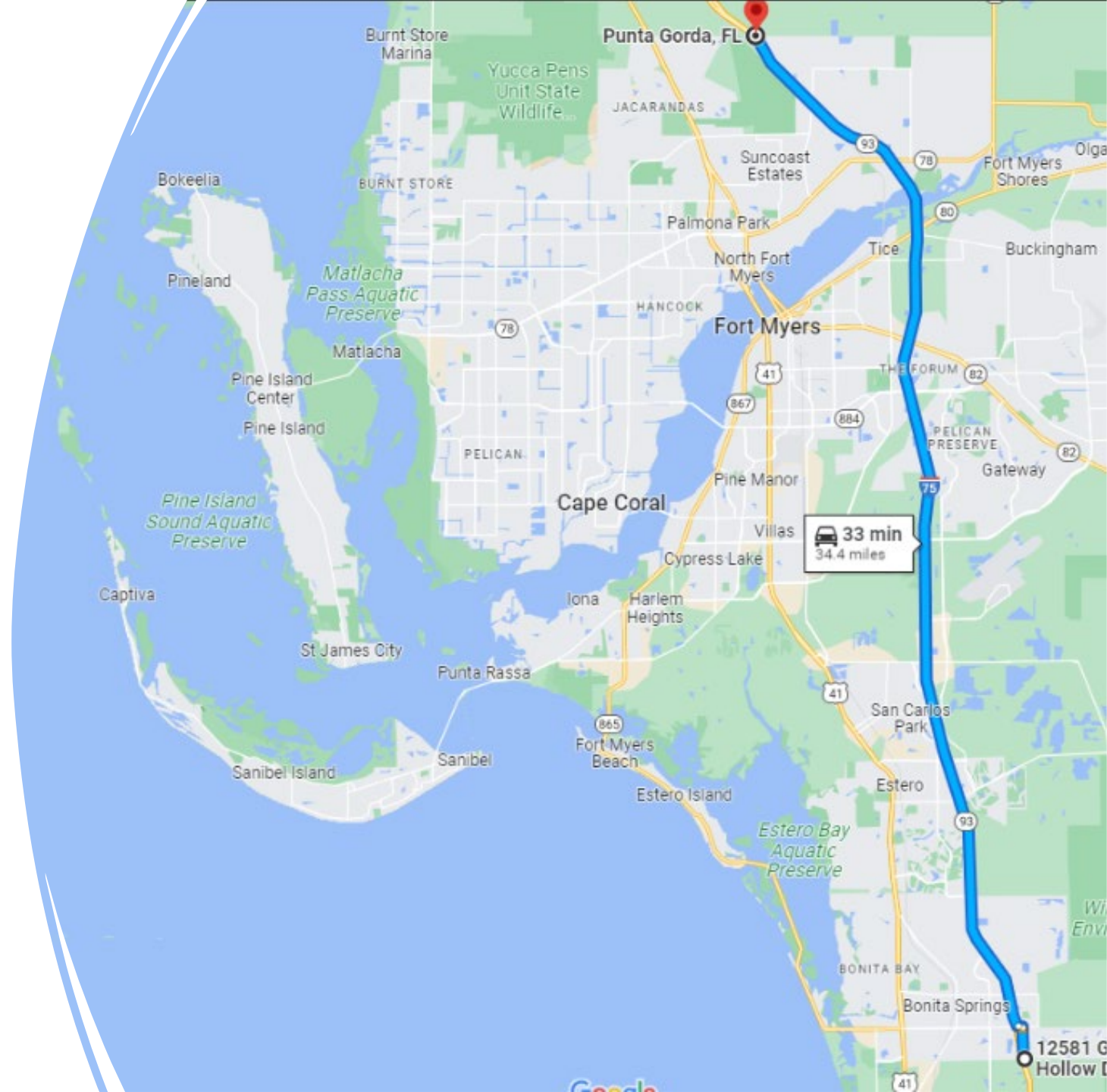
Source: LiDAR, 2007

HURRICANE DILBERT — Tuesday, OCT. 25

Situation Report

- Lee County endured 34 hours of Hurricane Dilbert
- Max Winds of 115 mph, decreasing to 110 mph, battered Lee County for 16 hours
- 14” of rain has fallen
- 15’ of salt water inundation
- Dilbert’s eye was 35 miles wide
- Only southern Lee County has not been impacted by Dilbert’s eye wall
- No reports of tornados

For
perspective:
35 miles is
longer than
Lee County



+

•

○

HURRICANE DILBERT – Wednesday, OCT. 26

Situation Report

- Preparedness Operations ceased at 0300 hrs on Monday, October 24
- Response Operations commenced at 1300 hrs on Tuesday, October 25
- Search & Rescue Ops are underway
- Geographic Divisions are reporting initial damages
- Flyover damage assessment is currently underway

+

•

○

HURRICANE DILBERT – Thursday, OCT. 27

Situation Report – 48 hours after impact

- Storm surge has receded; Flooding from rainfall still present in Bonita Springs, Estero, and parts of Lehigh Acres
- 30% of the County is still without power – Cape Coral South of Veteran's Pkwy between Chequita and Del Prado, Islands
- Debris removal is underway
- Bridges to Sanibel, Boca Grande, Cape Coral and the I-75 bridges are all closed until inspected (I-75 has priority)
- RSW is operational; Page Field suffered damage to hangars and planes due to wind and flooding
- Dusk to Dawn Curfew is in place

HURRICANE DILBERT RECOVERY — SHORT TERM

Lee County Objectives

- Debris Removal
- Restore Critical Infrastructure
 - Power
 - Water
 - Roadways
 - Communications
 - Health and Medical
- Cease Shelter Operations
- Keep Residents in Lee County
- Return Residents to Work and School
- Controlled Re-Entry and Curfew Enforcement

QUESTIONS



What information do you need for insurance documentation, and how are you retrieving it?



How are you contacting your employees?



What information are you sharing with corporate?



What are your business continuity plans?

+

•

○

HURRICANE DILBERT –

Friday,
November 25,
2022

Situation Report – One month after impact

- All bridges have been inspected and are determined to be safe for travel
- Some areas of Fort Myers Beach, Boca Grande, Sanibel, and Captiva are still without power
- Debris is cleared from all major roadways
- Curfew has ended

QUESTIONS



Are there any reconstruction efforts or contracts in place at this time?



What information can you provide to your employees about returning to work?



Are you able to provide rooms to workers and volunteers?



What information and resources do you need at this time?

HURRICANE DILBERT RECOVERY — LONG TERM

Lee County Objectives

- Debris Removal
- Normalize Housing Options
- Keep Residents in Lee County
- Community
Redevelopment/Revitalization
- Establish Economic Stability
- Re-Evaluate Land
Development Measures

+

•

○

HURRICANE DILBERT –

Friday,
April 25,
2022

Situation Report – 6 months after impact

- Power is restored throughout Lee County
- Recovery workers and volunteers are still in need of accommodations
- Beaches are still in the process of being restored
- Boats were left unsecured and abandoned and are washing up at Punta Rassa

QUESTIONS

What recovery actions are you still taking?

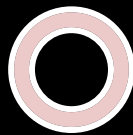
Where in the reconstruction process do you envision being after 6 months?

What resources do you need at this time?

THE REAL HURRICANE DILBERT

A combination of two actual storms.

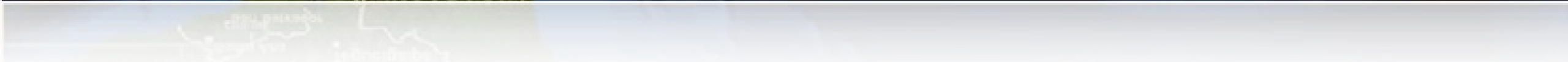
- Both storms made landfall as Category 3 hurricanes.
- Both storms occurred in the September – October period of time.
- The physical features of the hurricane are based on data from....



HURRICANE WILMA

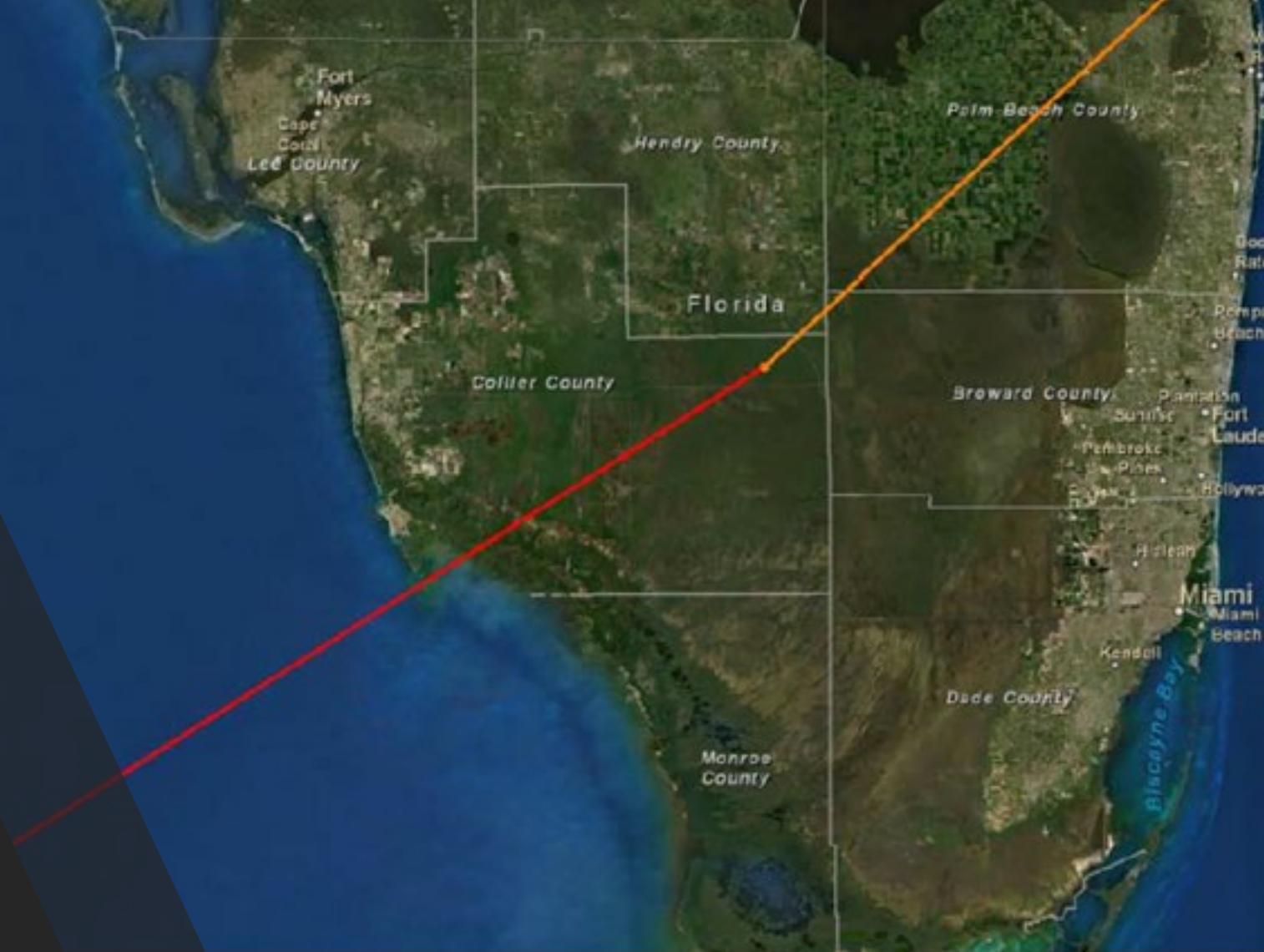
October 15 – 26, 2005





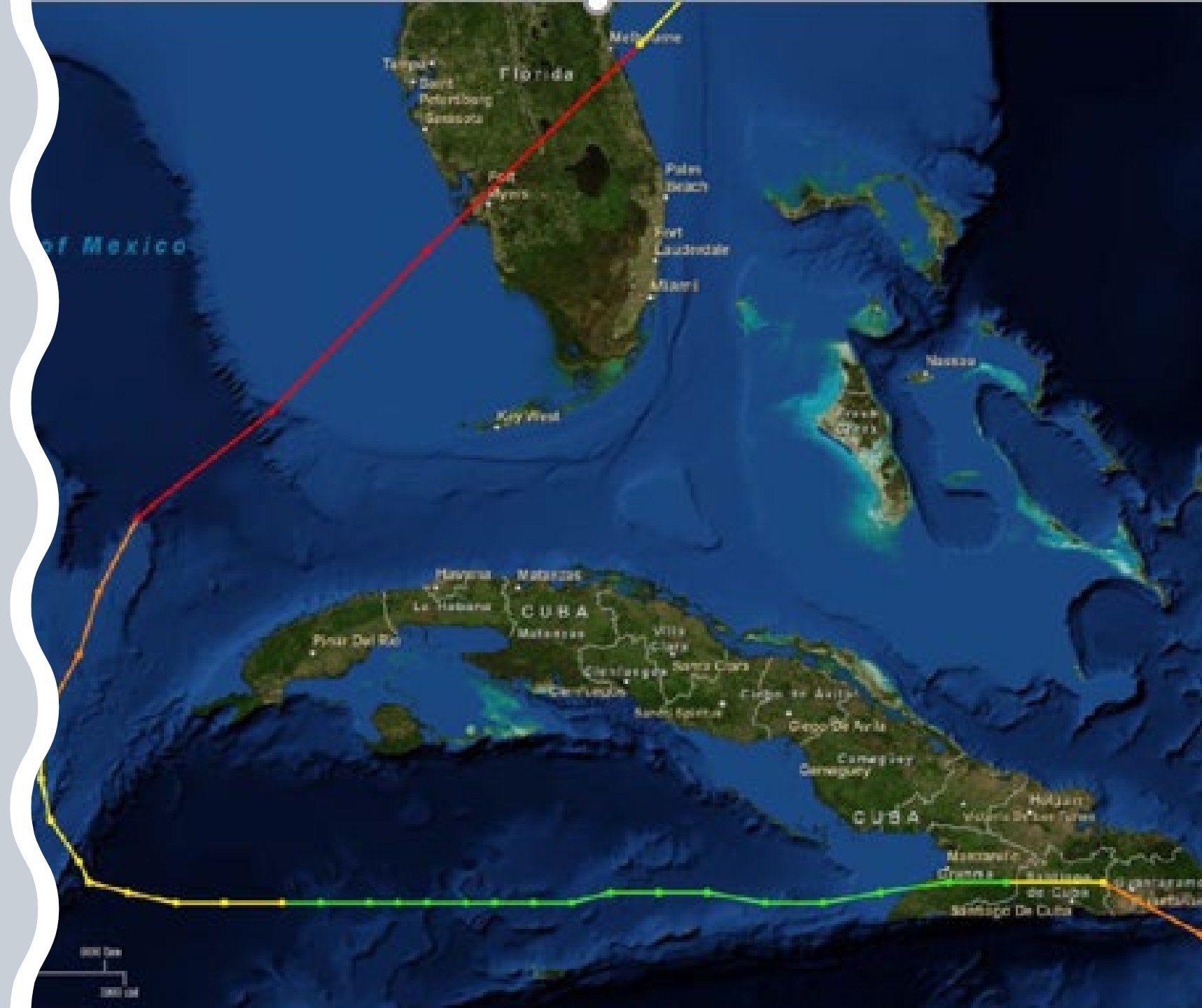
A close call for a land-falling
Category 3 hurricane.

HURRICANE WILMA



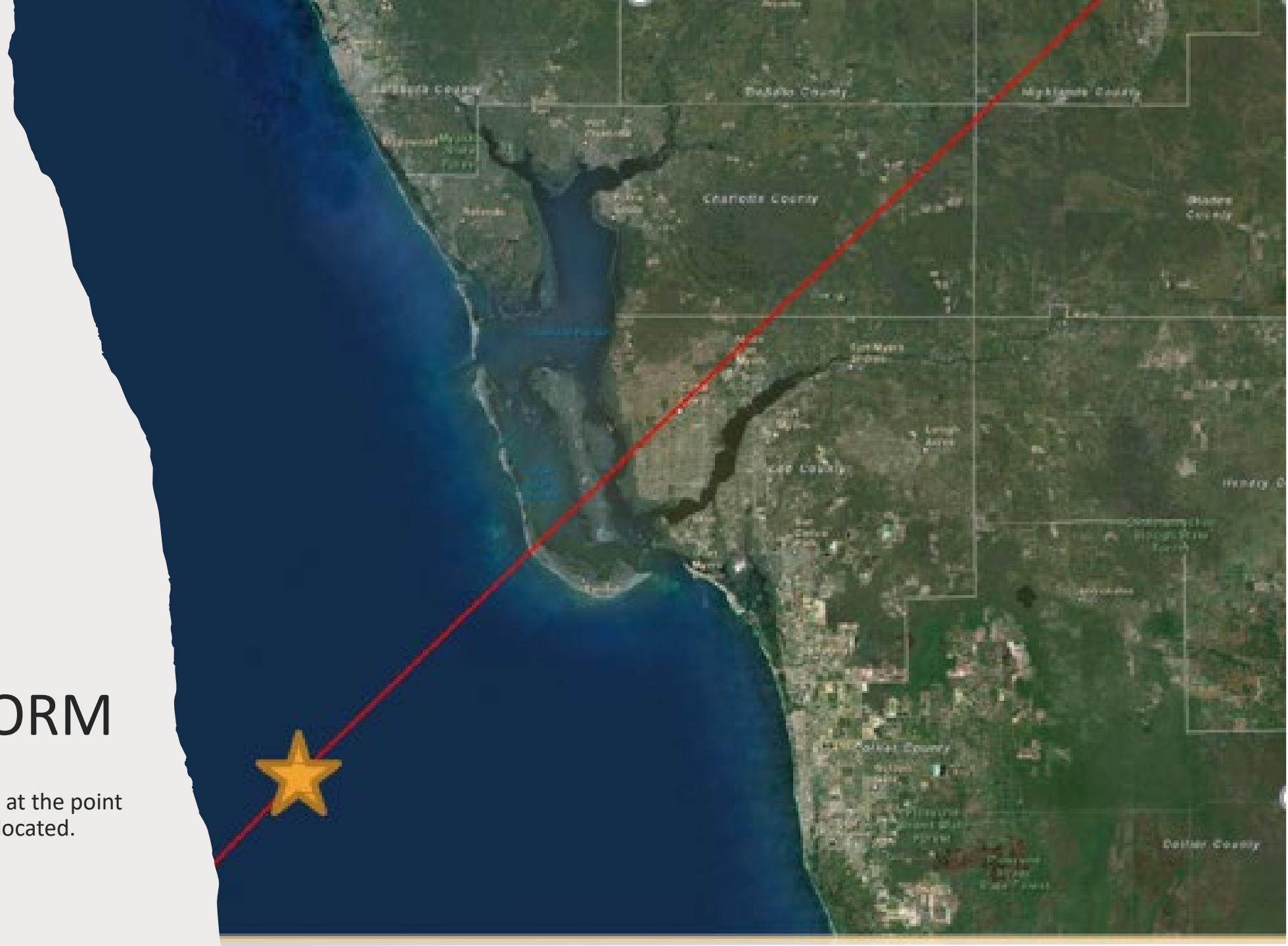
1873 NOT NAMED STORM

September 26 – October 10,
1873



1873 NOT NAMED STORM

Recorded pressure of 959 mb at the point
in the track where the star is located.



THE REAL HURRICANE DILBERT

- 57 Advisory points;
- At landfall sustained winds were 115 mph;
- A recorded pressure of 959 mb prior to landfall;
- Historical documents note:
 - There was a “huge surge”;
 - The storm “destroyed Punta Rassa”;
 - The storm “destroyed Captiva.”
- In 1873, this area was part of Monroe County;
- There were less than 200 residents here.

THE REAL HURRICANE DILBERT

What are the odds?

Would you change any decisions you made?



Notifications and Alerts




LeePrepares



AlertLee



www.LeeEOC.com



Questions? Concerns?

The Visitor & Convention Bureau and the Emergency Operations Center teams are here to assist.

There are no questions too small.

